

# MARK YOUR CALENDAR

Many of ASH's career-enhancement awards and training programs have multiple deadlines. Please use the calendar below to help you plan during your application process. For exact application deadlines, please visit the ASH website.

- January:** CRTI letter-of-intent deadline\* and MHFA, RTAF application deadline
- March:** CRTI, ASH-AMFDP, and ASH MEI application deadlines
- May:** Scholar Awards letter-of-intent deadline\* and Bridge Grant application deadline
- July:** TRTH letter-of-intent deadline\*
- August:** Scholar Awards application deadline
- October:** TRTH application deadline
- November:** Bridge Grant application deadline
- December:** ASH annual meeting

*\*Must submit in order to be eligible to apply.*



## Get the funding, training, and guidance you need to move your career forward.

As you move forward through your hematology career in hopes of finding new solutions and answers to the field's biggest problems and questions, the American Society of Hematology (ASH) is here to support and enhance your knowledge, research, and expertise. Through the Society's career-enhancement awards and training programs, you can get funding and guidance needed to improve the quality of your research and receive financial support during the critical times in your investigation. Each of these programs is designed to meet the unique needs of fellows or faculty at a particular stage of their careers.

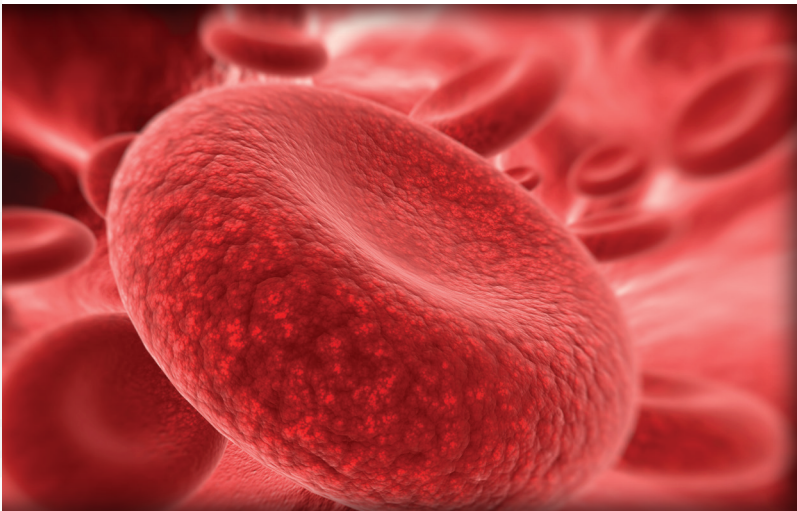
American Society of Hematology  
2021 L Street, NW, Suite 900  
Washington, DC 20036  
Phone: 202-776-0544  
Email: [customerservice@hematology.org](mailto:customerservice@hematology.org)



Enhance your knowledge,  
research, and expertise  
[www.hematology.org/Awards](http://www.hematology.org/Awards)



ASH® | Awards



# Career-Enhancement Awards and Training Programs

[www.hematology.org/Awards](http://www.hematology.org/Awards)



American Society of Hematology  
Helping hematologists conquer blood diseases worldwide



**ASH Research Training Award for Fellows (RTAF)**

**Research support for junior researchers in hematology-related training programs.**

RTAF helps fellows in training in the United States and Canada pursue a career in academic hematology by ensuring they have protected time for research and can generate sufficient expertise to be competitive when applying for future award funding.

Funding is available for up to four RTAF recipients to apply for a second year of support for the year following their initial award.


 **AWARD**  
\$70,000

 **LEARN MORE**  
[www.hematology.org/Awards](http://www.hematology.org/Awards)

**ASH Clinical Research Training Institute (CRTI)**

**Year-long education and mentoring course for hematology fellows and early-career faculty.**

CRTI prepares fellows and junior faculty for careers in patient-oriented clinical research by providing intensive education, career guidance from leaders in the field, and a supportive peer network. The program includes a summer workshop in La Jolla, CA, and mandatory sessions at the ASH annual meeting and in Washington, DC, in the spring. CRTI is open to both U.S. and international applicants.


 **AWARD**  
ASH pays for participants' travel expenses, lodging, and meals to attend the summer workshop and spring meeting.

 **LEARN MORE**  
[www.hematology.org/Awards](http://www.hematology.org/Awards)

**ASH Medical Educators Institute (MEI)**

**Hematology training program for faculty early in their medical education careers.**

ASH MEI is designed to develop future leaders in hematology education by providing a “boot camp” in teaching techniques and medical education scholarship, as well as trainee and program evaluation. The program includes a three-day workshop in Washington, DC, and continuing education via webinars.


 **AWARD**  
ASH covers participants' travel expenses to attend the workshop, lodging, and meals.

 **LEARN MORE**  
[www.hematology.org/Awards](http://www.hematology.org/Awards)

**ASH-EHA Translational Research Training in Hematology (TRTH)**

**Year-long training and mentoring experience for early-career scientists.**

A joint effort of the European Hematology Association (EHA) and ASH, TRTH helps junior researchers build successful careers in hematologic translational research. The program includes a week-long spring course, a meeting at the EHA Annual Congress, and a meeting at the ASH annual meeting where trainees make a presentation on the status of their research. TRTH is open to both U.S. and international applicants.

 **AWARD**  
ASH and EHA arrange and pay for travel expenses and accommodations for the spring course and follow-up meetings.

 **LEARN MORE**  
[www.hematology.org/Awards](http://www.hematology.org/Awards)

**ASH Bridge Grant Program**

**Bridge funding for hematology researchers affected by NIH budget cutbacks.**

The ASH Bridge Grants provide funding for investigators who submitted a hematology-related NIH R01 grant in the past 18 months and whose proposals were scored but not funded. Basic, translational, patient-oriented, and outcomes-based research is supported.


 **AWARD**  
\$150,000

 **LEARN MORE**  
[www.hematology.org/Awards](http://www.hematology.org/Awards)

**ASH Scholar Awards**

**Financial support for hematology fellows through junior faculty dedicated to research.**

The ASH Scholar Awards provide hematology researchers with partial salary or other support during the critical period required for completion of training and achievement of status as an independent investigator. Eligible applicants must conduct basic science or clinical research within the U.S. or Canada.

 **AWARD**  
Up to \$100,000 for fellow scholars  
Up to \$125,000 for fellow to faculty scholars  
Up to \$150,000 for junior faculty scholars over a two- to three-year period.


 **LEARN MORE**  
[www.hematology.org/Awards](http://www.hematology.org/Awards)

**ASH-Harold Amos Medical Faculty Development Program (AMFDP)**

**Four-year postdoctoral research grant for minority scholars in the field of hematology.**

ASH-AMFDP is part of the ASH Minority Recruitment Initiative. The program helps scholars from historically disadvantaged backgrounds receive academic and

research appointments in the field of hematology. The grant provides participants with salary support, as well as two mentors to provide research and career guidance.


 **AWARD**  
\$420,000 in support of postdoctoral research over the course of four years.

 **LEARN MORE**  
[www.hematology.org/MRI](http://www.hematology.org/MRI)

**ASH Minority Hematology Fellow Award Program (MHFA)**

**Encourages junior researchers to pursue careers in academic hematology.**

Part of the ASH Minority Recruitment Initiative, the MHFA encourages junior researchers from underrepresented minority groups to pursue careers in academic hematology. The award provides research mentorship and salary support over a two- to three-year period for MD/DO, PhD, and MD/DO-PhD postdoctoral fellows. At the end of their experience, participants will have the opportunity to present their research findings at the ASH annual meeting.

 **AWARD**  
\$100,000 to support two to three years of research

 **LEARN MORE**  
[www.hematology.org/MRI](http://www.hematology.org/MRI)

**“I wouldn’t be where I am today without having that sort of mentorship and early support from ASH.**

*- Dr. David Sykes  
2010 RTAF recipient,  
2013 TRTH participant, and  
2018 Scholar recipient*

