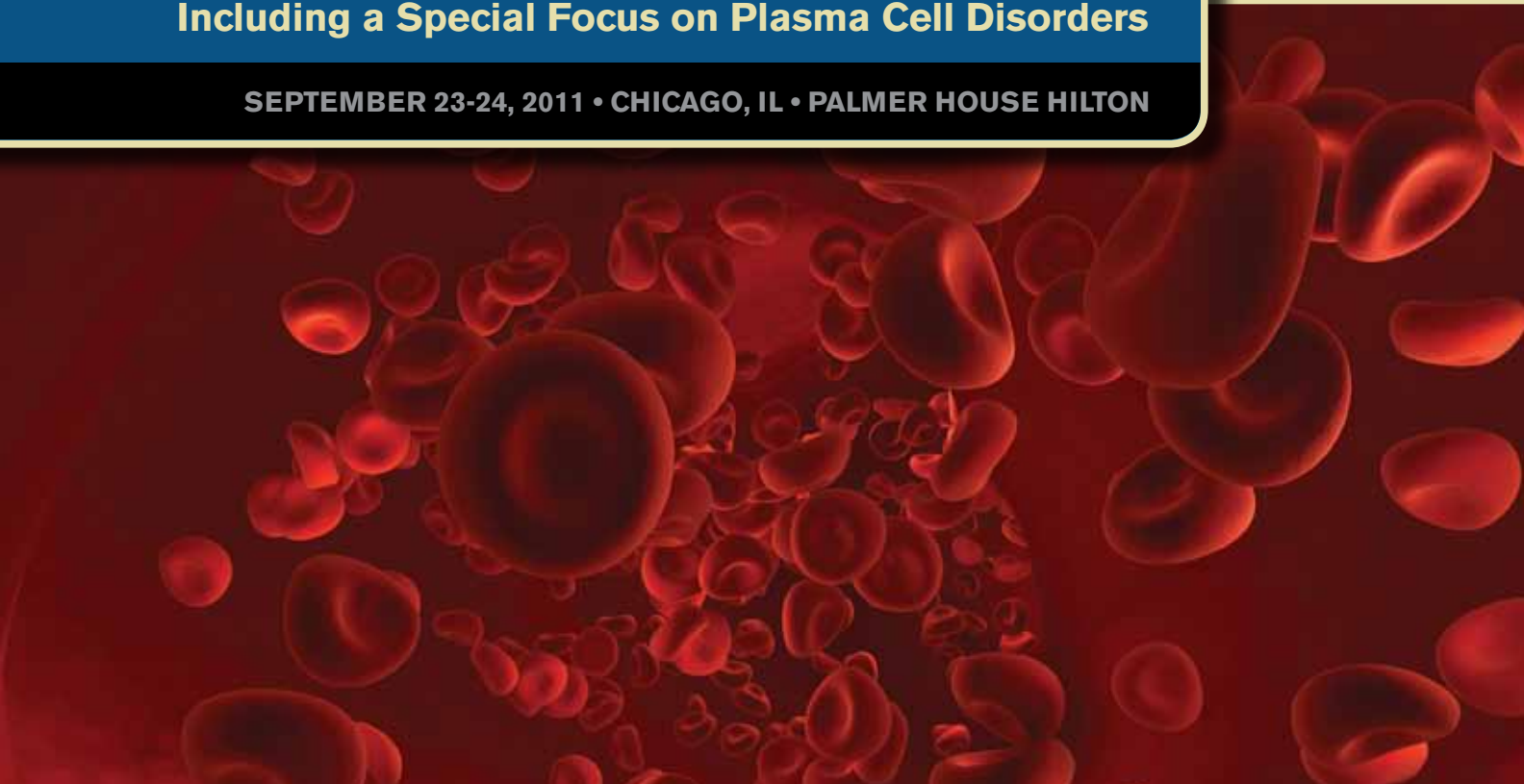




## **2011 ASH® State-of-the-Art Symposium**

### **Recent Advances in Hematologic Malignancies Including a Special Focus on Plasma Cell Disorders**

**SEPTEMBER 23-24, 2011 • CHICAGO, IL • PALMER HOUSE HILTON**



This meeting is sponsored by the American Society of Hematology (ASH) and presented in partnership with the following societies:

- Illinois Medical Oncology Society (IMOS)
- Iowa Oncology Society (IOS)
- Michigan Society of Hematology and Oncology (MSHO)
- Missouri Oncology Society (MOS)



## Greetings from the Program Co-Chairs

We invite you to join us at the ninth annual ASH State-of-the-Art Symposium, taking place in Chicago, September 23-24. The clinical content offered during this meeting is designed to supplement the ASH annual meeting program while allowing for intimate group discussions and ample one-on-one time with speakers and colleagues. We have carefully selected an extraordinary group of expert speakers for their breadth of knowledge in the field of hematology.

This year's program will focus on the newest treatment options for hematologic malignancies with a special focus on plasma cell disorders. Topics will include myeloproliferative disorders, lymphoma, and myeloma. Two sessions on treatment controversies will undoubtedly be highlights of the program: the first focuses on the debate about instituting myeloma therapy ("Synergy versus Sequence") and the other examines when and when not to use oral thrombin inhibitors.

We encourage you to take advantage of this unique opportunity to ask our expert speakers about strategies for diagnosis, new treatment approaches, and solutions for your day-to-day patient cases. For the latest meeting details and to register, please visit [www.hematology.org/sas](http://www.hematology.org/sas).

Sincerely,

**Angela Dispenzieri, MD**  
2011 ASH State-of-the-Art Symposium  
Program Co-Chair

**Janice Gabrilove, MD**  
2011 ASH State-of-the-Art Symposium  
Program Co-Chair

See you in Chicago September 23-24!

**PARTNERING  
SOCIETIES:**





## General Information

### ABOUT THE ASH STATE-OF-THE-ART SYMPOSIUM

In 2004, ASH launched the first State-of-the-Art Symposium (SAS). The one-and-a-half-day program, held in September each year, is designed to provide practitioners with an update on advances in the treatment of blood diseases with the intent of addressing educational gaps and improving competence in daily hematology practice.

The SAS provides high-quality, up-to-date, evidence-based continuing medical education that spans the medical field and practice of hematology. The smaller, clinically focused program format provides attendees with ample opportunities to discuss their actual patient cases and practice challenges with experts in the field. Additionally, in order to enhance the exchange of program content, panel discussions and “breakfast with the experts” are included in the meeting content.

### LEARNING OBJECTIVES

Upon participation in this activity, attendees will be able to:

- Examine advances in clinical and translational hematologic research
- Evaluate the role of new diagnostic techniques and therapeutic approaches as applied to the care and management of people with blood diseases
- Implement new patient management and care strategies or revise existing ones based upon knowledge gained at the 2011 ASH State-of-the-Art Symposium

### CONTINUING MEDICAL EDUCATION (CME)

The American Society of Hematology (ASH) is accredited by the Accreditation Council for Continuing Medical Education to provide continuing medical education for physicians.

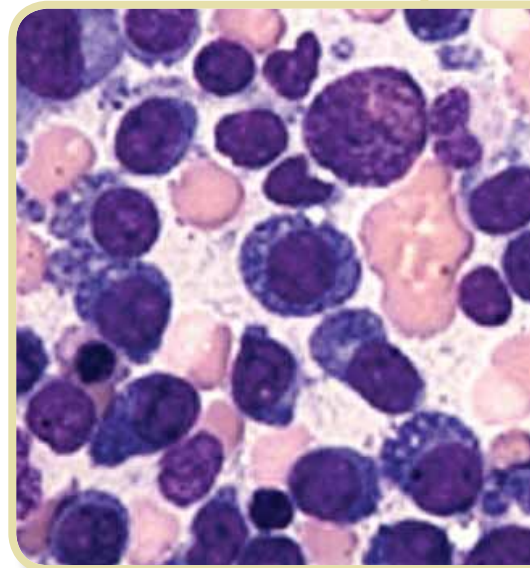
ASH designates this live educational activity for a maximum of 11 *AMA PRA Category 1 Credits*<sup>™</sup>. Physicians should claim only the credit commensurate with the extent of their participation in the activity.

Physicians not licensed in the U.S. who participate in this CME activity are also eligible for *AMA PRA Category 1 Credits*.

### WHO SHOULD ATTEND

This meeting is designed to be a rewarding educational event for:

- Hematologists
- Oncologists
- Hematopathologists
- Trainees and Fellows
- Allied Health Professionals



Instructions for obtaining a certificate awarding *AMA PRA Category 1 Credits* or a certificate of attendance will be provided at the meeting site.

# Program Schedule

## FRIDAY, SEPTEMBER 23

---

**12:00 noon** Registration and Exhibits Open/Lunch

---

**1:00 p.m.** Welcome and Introductions

---

**1:10 p.m.** **The Great Debate: Instituting Myeloma Therapy – Synergy versus Sequence**

Angela Dispenzieri, MD, Mayo Clinic in Rochester

Ruben Niesvizky, MD, Weill Medical School of Cornell University

---

**1:50 p.m.** **Amyloidosis: Isn't It The Same as Myeloma?**

David Seldin, MD, PhD, Boston University and Boston Medical Center

---

**2:30 p.m.** Panel Discussion

---

**3:00 p.m.** Break and Exhibits

---

**3:20 p.m.** **Monoclonal Gammopathy Consults: Wielding One's Way Between Monoclonal Gammopathy-Associated Neuropathy, Nephropathy, and Dermopathy**

Ola Landgren, MD, PhD, National Cancer Institute, National Institutes of Health

---

**4:00 p.m.** **Relapsed Myeloma – What's New (and Old): Treatment and Supportive Care**

James R. Berenson, MD, Institute for Myeloma and Bone Cancer Research

---

**4:40 p.m.** **Monoclonal B-Cell Lymphocytosis and Chronic Lymphocytic Leukemia: Clinical and Diagnostic Implications**

Jennifer Brown, MD, PhD, Dana-Farber Cancer Institute

---

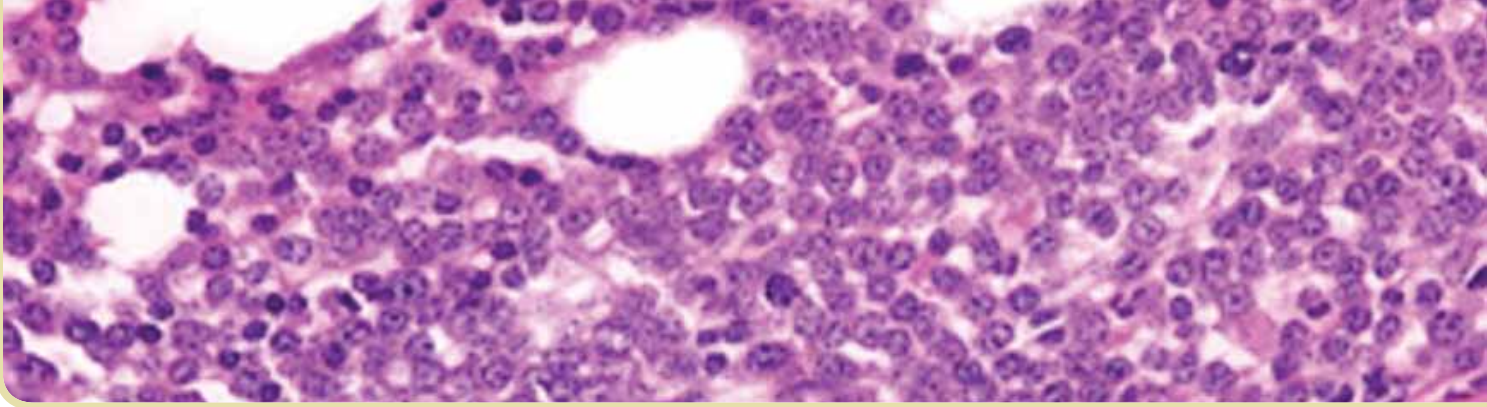
**5:20 p.m.** Panel Discussion

---

**5:50 p.m.** Program Concludes for the Day

---





## SATURDAY, SEPTEMBER 24

- 
- 7:00 a.m. Breakfast with the Experts**  
(Speakers and Attendees)
- 
- 7:55 a.m. Introductions and Announcements**
- 
- 8:00 a.m. Practice Update**
- 
- 8:10 a.m. New Treatment Approaches in Low-Grade Lymphoma**  
Jonathan Friedberg, MD, James P. Wilmot Cancer Center,  
University of Rochester
- 
- 8:50 a.m. Large Granular Lymphocyte Disorders**  
Neal Young, MD, National Institutes of Health
- 
- 9:30 a.m. Panel Discussion**
- 
- 10:00 a.m. Break and Exhibits Open**
- 
- 10:20 a.m. Breaking News: New Oral Thrombin Inhibitors – When and When Not to Use**  
Thomas L. Ortel, MD, PhD, Duke University Health System
- 
- 11:00 a.m. Use of Hematopoietic Growth Factors: When and Where?**  
Janice Gabilove, MD, Mt. Sinai Medical Center
- 
- 11:40 a.m. Hodgkin Lymphoma**  
Anas Younes, MD, MD Anderson Cancer Center
- 
- 12:20 p.m. Panel Discussion**
- 
- 12:50 p.m. Lunch and Exhibits Open**
- 
- 2:00 p.m. Acute Lymphocytic Leukemia**  
Anjali Advani, MD, The Cleveland Clinic
- 
- 2:40 p.m. Molecular Profiling in Acute Myeloid Leukemia: Treatment Implications**  
Mark J. Levis, MD, PhD, Johns Hopkins University
- 
- 3:20 p.m. Novel Treatment Strategies in Myeloproliferative Disorders and Chronic Myeloid Leukemia**  
Ronald Hoffman, MD, Mt. Sinai Medical Center
- 
- 4:00 p.m. Panel Discussion**
- 
- 4:30 p.m. Symposium Adjourned**
-

# Registration Information

In order to maximize each participant's experience, attendance at the State-of-the-Art Symposium is limited. Advance registration is strongly encouraged. Your registration fee includes admission to the educational sessions, access to the exhibit hall, breakfast and lunch on Saturday, and CME processing.

## REGISTRATION RATES

	<b>Advance Registration</b> (available through September 2)	<b>On-Site Registration</b> (begins on September 23)
ASH Member	\$275	\$325
Member of Partner Society <sup>1</sup>	\$275	\$325
ASH Associate Member	\$135	\$160
Non-Member Resident or Fellow <sup>2</sup>	\$150	\$175
Allied Health Professional <sup>3</sup>	\$175	\$200
Non-Member	\$375	\$450
Emeritus/Honorary Member <sup>4</sup>	Complimentary	Complimentary

<sup>1</sup>Partner societies include:

- Illinois Medical Oncology Society
- Iowa Oncology Society
- Michigan Society of Hematology and Oncology
- Missouri Oncology Society

Members of partnering societies should email the ASH Customer Relations Department at [customerservice@hematology.org](mailto:customerservice@hematology.org) to receive instructions on the process and credentials needed for registering at this rate.

<sup>2</sup>Non-member residents and fellows are required to provide a letter on their institution's letterhead, signed by a training program director, which states that the registrant is currently enrolled in a training program. Registrants must email or fax a scanned copy of the letter to [customerservice@hematology.org](mailto:customerservice@hematology.org) or 202-292-0250. Once trainee status has been verified, ASH will reply with instructions and credentials needed for registering at this rate.

<sup>3</sup>Allied health professionals should email the ASH Customer Relations Department at [customerservice@hematology.org](mailto:customerservice@hematology.org) to receive instructions on the process and credentials needed for registering online at this rate.

<sup>4</sup>ASH Emeritus and Honorary members should contact the ASH Customer Relations Department at 866-828-1231 (International callers dial 011+1+202-776-0544) or email [customerservice@hematology.org](mailto:customerservice@hematology.org) to register.

## HOW TO REGISTER

**Online at**

[www.hematology.org/sas](http://www.hematology.org/sas)

Payment by American Express, MasterCard, or Visa is accepted.

**By Mail**

Mail the registration form (available at [www.hematology.org](http://www.hematology.org)) and payment by check only to:

ASH Administration  
P.O. Box 791210  
Baltimore, MD 21279-1210

**Cancellation Deadline:**

August 31, 2011

To request a refund, email [customerservice@hematology.org](mailto:customerservice@hematology.org). If your request is received by August 31, 2011, you will receive a refund minus a \$25 processing fee.

**Questions?**

Contact ASH Customer Relations at 202-776-0544 or email [customerservice@hematology.org](mailto:customerservice@hematology.org).

# Hotel Information

## HOTEL ACCOMMODATIONS

The meeting headquarters is the Palmer House Hilton, located at 17 East Monroe Street, Chicago, IL 60603.

The Palmer House Hilton is an iconic, world-class downtown Chicago hotel located within walking distance of the best attractions the city of Chicago has to offer, such as Millennium Park, Grant Park, Lake Michigan, the Art Institute of Chicago, the theater district, and the Magnificent Mile.

ASH has secured a block of rooms for meeting attendees at the special discounted rate of \$189 (plus tax, currently 15.4%) per room night. To reserve a room, contact the Palmer House Hilton directly at 877-865-5321; be sure to identify yourself as an ASH State-of-the-Art Symposium meeting attendee and refer to the group code **ASH**. Rates cannot be adjusted at check-in or check-out for guests who fail to identify their affiliation at the time the reservation is made.

**Hotel Reservation Deadline:** September 2, 2011

Make reservations well before the cutoff date to ensure availability. Payment for room and tax and all incidental charges is due in full upon check-out. If you wish to cancel, please do so one day prior to arrival to avoid cancellation penalties.

For a direct link to the hotel reservations Web page, visit [www.hematology.org/sas](http://www.hematology.org/sas).

## GROUND TRANSPORTATION

The Palmer House Hilton is located about 18 miles from the O'Hare International Airport and 12 miles from Chicago Midway Airport. Transportation from either airport to the hotel can be arranged through GO Airport Express, taxi, or public transportation. GO Airport Express ticket counters and loading zones are conveniently located on lower levels by baggage claim.

When taking public transportation from O'Hare International Airport, take the Blue Line train to the Monroe/Dearborn stop. Follow Monroe east to the hotel. The Palmer House Hilton is on the south side of the street. From Midway Airport, take the Orange Line from Midway to downtown. Get off at the Adams/Wabash stop. The Palmer House Hilton is located on the west side of Wabash Avenue.



## ATTRACTIONS NEAR THE PALMER HOUSE HILTON INCLUDE:

- Adler Planetarium
- Art Institute of Chicago
- Chicago Architecture Foundation
- Chicago Symphony Orchestra
- Chicago Theatre
- Field Museum
- John Hancock Observatory
- Lyric Opera
- Macy's on State Street
- The Magnificent Mile
- Millennium Park
- Navy Pier
- Shedd Aquarium
- Spertus Institute of Jewish Studies
- Willis Tower (Formerly Sears Tower)

# 2011 ASH® State-of-the-Art Symposium

SEPTEMBER 23-24, 2011 • CHICAGO, IL • PALMER HOUSE HILTON

## STAY CURRENT ON THE LATEST ADVANCES IN CLINICAL HEMATOLOGY

Join your colleagues at the ninth annual State-of-the-Art Symposium to share and learn new practice strategies for managing your day-to-day patient cases. This year's program will focus on new developments in the treatment, diagnosis, and management of hematologic malignancies, with a focus on plasma cell disorders.

**Advance Registration Deadline:**  
September 2, 2011

**Hotel Reservations:**  
877-865-5321

**Meeting Headquarters:**  
Palmer House Hilton  
17 East Monroe Street  
Chicago, IL 60603

**Hotel Reservation Deadline:**  
September 2, 2011

Visit [www.hematology.org/sas](http://www.hematology.org/sas) for complete meeting details.



**American Society of Hematology**  
2021 L Street, NW, Suite 900  
Washington, DC 20036  
Phone: 202-776-0544  
Email: [customerservice@hematology.org](mailto:customerservice@hematology.org)  
Register online at: [www.hematology.org/sas](http://www.hematology.org/sas)

